

modular Caseworkworks

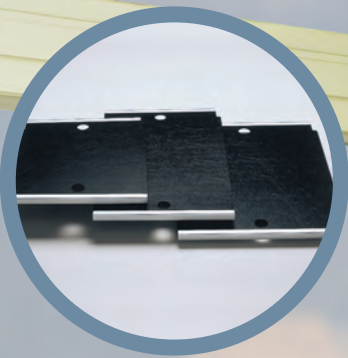


Modular/Flexible/Durable

Designed to meet your project specifications

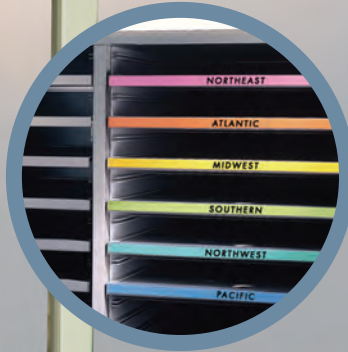


Quality, concealed 110 degree hinge with and without soft close are invisible from the outside of the cabinet for a smooth, uninterrupted door aesthetic. Other options offered are the 5 knuckle and 270 degree hinge.



Hamilton's unique shelving systems provides shelf adjustability in 1" increments.

Shelves feature full width, color coded labeling for quick, accurate sorting.



Our easy-to-install, rail-mounted wall cabinets provide precise height and depth adjustment for clean installation and the look of custom millwork.



Leveling system assures perfect alignment of modular components. Laminate, powder coated steel and stainless steel kick plate options are available.

Choose from our selection of standard handles, or we can match your custom specifications.

We seal all edges with resistant PVC for durability and no exposed edges.





es with impact-
urability; there are
on our casegoods.

Full-extension ball-bearing slides provide a lifetime of smooth operation. Other drawer slide selections include durable under mount and under mount with soft close.

BH



Modular/Flexible/Durable . . . easy to specify

Use our Specification Guide to easily select a standard cabinet design and dimensions, or tell us your specifications and our Project Management Team will work with you to create the exact solution that meets your requirements. modular**Caseworks**' ready-to-install manufacturing techniques minimize on-site installation time and disruption.



Location of this and preceding spreads courtesy of Urban Sites

BJ



BA



WA



Modular/Flexible/Durable . . . lifetime warranty

Hamilton's computer aided design and manufacturing (CAD/CAM) combine with the experience of our dedicated craftsmen to create the aesthetic and cost-effective solutions that assure a project's success.

All modular **Caseworks** come with a Lifetime Warranty.



SF



Modular/Flexible/Durable . . . reconfigurable and expandable
From storage lockers to bookcases and closets, modular **Caseworks'** solutions have the look of expensive millwork, but are easily reconfigured and expanded. Computer generated design and manufacturing specifications are archived to insure a perfect match for future orders.

SE



SB



SD





©2007 Simmons Photography here and on preceding pages

WF



BL



BE



WJ



Modular/Flexible/Durable . . . organized

Our adjustable shelf and organizing modules are easily integrated with our cabinet solutions to meet the specific storage and accessibility requirements of any activity. Adjustability on 1" increments easily facilitates expansion and contraction of shelf capacity, eliminating wasted space between shelves.



Customize with modular Caseworks

For almost 50 years Hamilton Sorter has set the standard of quality and value for modular organizing components and custom casework. Both our standard products, and the custom solutions developed in consultation with our Project Management Team, reflect our focused design and manufacturing expertise. Whether a centerpiece reception area for Havasu Regional Medical Center's new maternity ward or the Department of Pharmaceutical Sciences Chair at the University of Arkansas for Medical Sciences dream laboratory, our objective is always the same: create precise solutions that meet a project's design and functional requirements.





Hamilton Sorter products at work at Harvard University

Workrooms

Mail Centers

Copy Centers

Reception Stations

Exam Rooms

Pantries



Bradford Systems
Corporate Offices
430 Country Club Drive
Bensenville, Illinois 60106
1-800-696-3453

Smart. Storage. Solutions.

www.BRADFORDSYSTEMS.com